

February 9th 2026
 CONSTRUCTION COST INDEX FOR NEW HOUSING
 December 2025

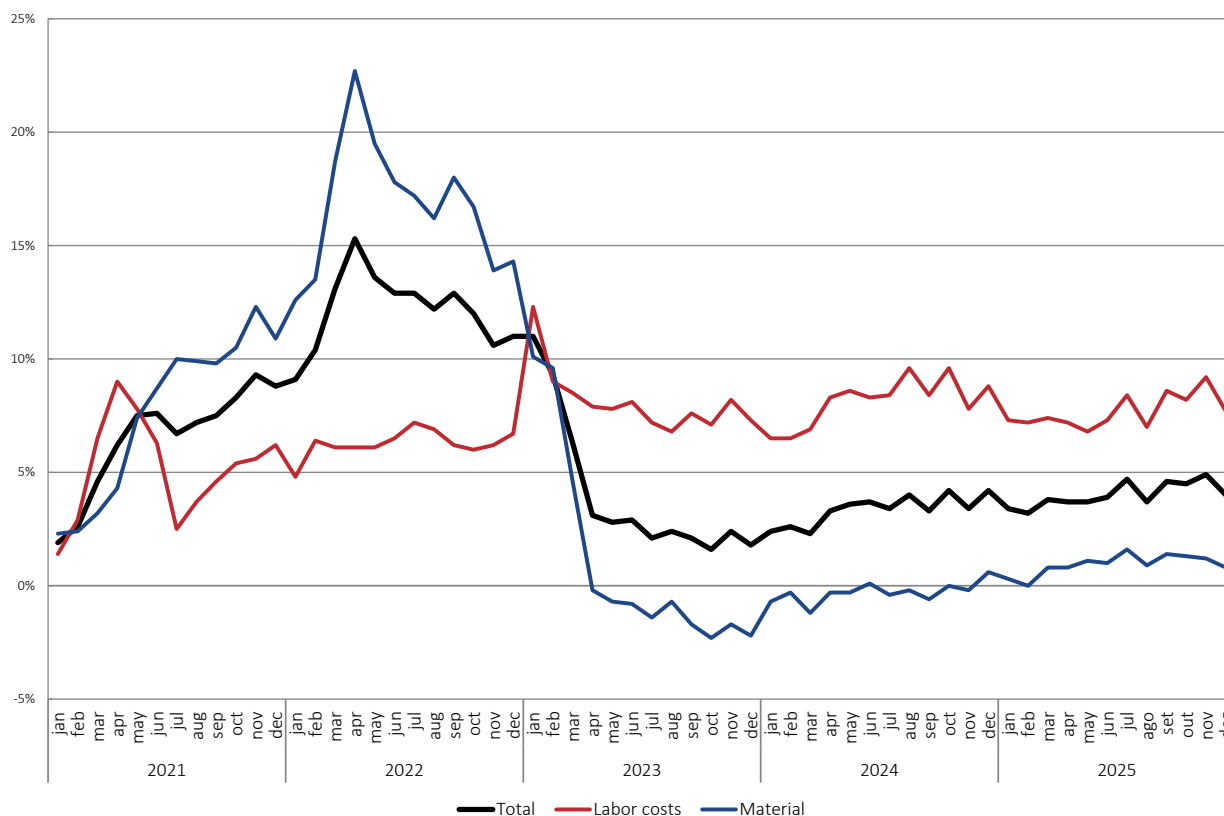
NEW HOUSING CONSTRUCTION COSTS ROSE BY 4.0%

In December 2025, construction costs for new residential buildings are estimated to have increased by 4.0% on a year-on-year basis, 0.9 percentage points less than the previous month. The price of materials presented a variation of 0.8% while labor costs rose 7.7%.

In 2025 the construction costs for new residential buildings presented an average rate of 4.0%, 0.6 p.p. more than in 2024. Labor costs rose 7.7% when compared with the previous year, while material prices increased 0.9%.

Figure 1

CONSTRUCTION COST INDEX FOR NEW HOUSING (YEAR-ON-YEAR)
 JANUARY 2021 – DECEMBER 2025 (100=2021)



CONSTRUCTION COST INDEX FOR NEW HOUSING – December 2025

EXPLANATORY NOTES

Construction Cost Index for New Housing

The Construction Cost Index for New Housing (CCINH) is a derived statistic that aims to measure the cost of construction of residential buildings in Portugal. The CCINH is a statistic covered by Regulation (EU) 2019/2152 of the European Parliament and of the Council of 27 November 2019 on European business statistics.

The current CCINH series (base 100 = 2021), which starts in January 2000, replaces the previous index series (base 100 = 2015). The CCINH is released monthly around 40 days after the end of the index reference period. In addition to the total, Statistics Portugal presents separate series for the cost of labor and the cost of building materials.

More details on the [methodology of the CCINH](#) can be found on INE's website (only available in Portuguese).

Revisions

The information used in the production of the labor cost index comes from an administrative data source, which is subject to a regular update. Due to this, the CCINH is released with a first estimate for the reference month n, a second estimate for month n-1, a third estimate for month n-2 and the final value for month n-3.

Seasonal adjustment

The results are seasonally adjusted, since a seasonal pattern was identified in the labor cost series. For the treatment of seasonality, the JDemetra program, which is available from [Eurostat's webpage](#), is used.

Month-on-month growth change

The monthly rate is the change in the index of a certain month compared with the index of the previous month expressed as a percentage. Although up to date, this measure can be affected by transient effects.

Year-on-year growth change

The year-on-year rate is the change in the index of a certain month compared with the index of the same month in the previous year expressed as a percentage.

12-month average change

The 12-month average rate is the change in the average index of one year compared with the average index of the previous year expressed as a percentage. This moving average is less sensitive to transient changes in prices.

Available information

- [New housing construction cost index \(Base - 2021\) by Production factor; Monthly](#)
- [New housing construction cost index \(Month-on-month growth rate - Base 2021 - %\) by Production factor; Monthly](#)
- [New housing construction cost index \(Year-on-year growth rate - Base 2021 %\) by Production factor; Monthly](#)
- [New housing construction cost index \(Annual average growth rate - Base 2021 - %\) by Production factor; Monthly](#)

Date of the next press release – March 9th 2026
