



March 14th, 2025
TRANSPORT ACTIVITIES
Air Transport Flash Statistics
January 2025

THE MOVEMENT OF PASSENGERS AT NATIONAL AIRPORTS CONTINUES TO REACH MONTHLY HIGHS

In **January 2025**, 4.2 million passengers and 18.2 thousand tonnes of freight and mail were handled at national airports, corresponding to year-on-year variations of +5.9% and -0.5%, respectively, compared with January 2024 (+3.9% and +9.6%, in the previous month, in the same order).

A historic monthly high of passengers at national airports was still recorded, with a daily average of 65.6 thousand passengers disembarked in January 2025, 6.8% higher value than the one registered in January 2024 (61.4 thousand).

France was the main country of origin and destination of flights, recording increases in the number of disembarked and embarked passengers compared with January 2024 (+6.5%; +1.9%). Spain and the United Kingdom ranked 2nd and 3rd as the main countries of origin, and inversely as the main countries of destination.

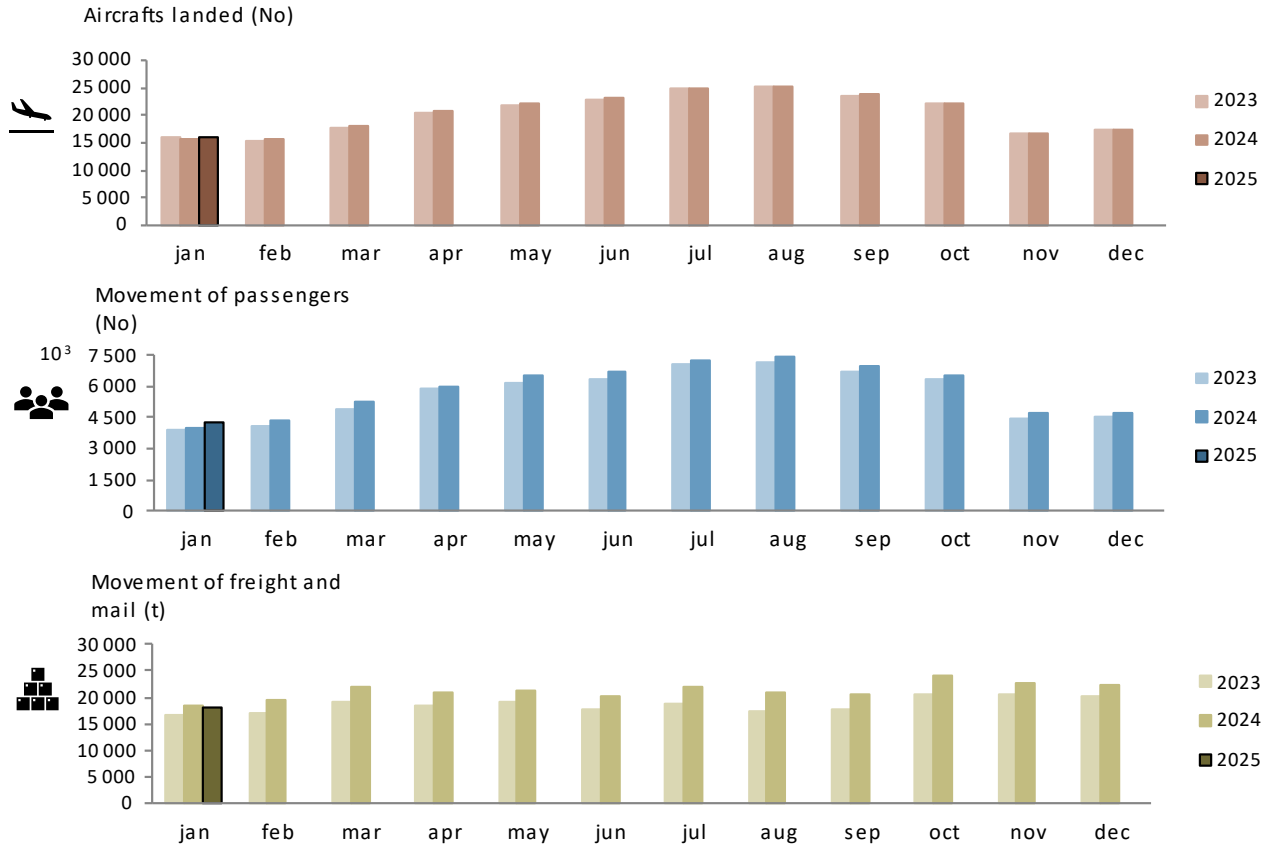
Consult the information on the [Interactive Application](#) (available only in Portuguese).

4.2 million passengers handled at national airports

In **January 2025**, nearly 16 thousand commercial aircrafts landed at national airports, corresponding to 4.2 million passengers (embarked, disembarked and direct transits) and 18.2 thousand tonnes of freight and mail were handled (+1.6%, +5.9% and -0.5%, respectively, compared with January 2024). In the previous month there were variations of +0.7%, +3.9% and +9.6% in the same order.



Figure 1. Aircrafts landed, passengers and freight/mail movement at national airports



Source: Survey to airports and aerodromes (ANA/ANAC/Statistics Portugal)

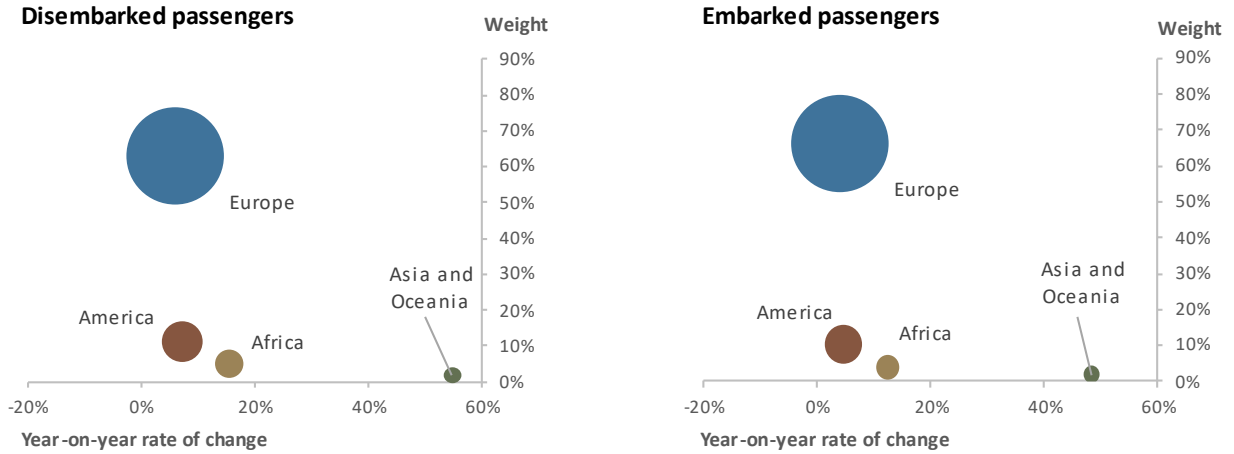
In January 2025, 81.1% of passengers disembarked at national airports corresponded to international traffic, reaching 1.6 million passengers (+7.6%¹), mostly from the European continent (63.2% of the total), corresponding to an increase of 6.1% compared with January 2024. The American continent was the second main origin, concentrating 11.1% of the total passengers disembarked (+7.1%).

Regarding embarked passengers, 82.4% corresponded to international traffic, totalling 1.8 million passengers (+5.3%), having 66.4% of the total as main destination airports in the European continent, recording an increase of 4.1% compared with January 2024. Airports in the American continent were the second main destination of embarked passengers (10.3% of the total; +4.8%).

¹ Unless stated otherwise, the rates of change presented in this press release correspond to year-on-year rates of change.



Figure 2. Passengers disembarked and embarked at national airports by nature at international traffic, by Continent of origin/destination – January 2025



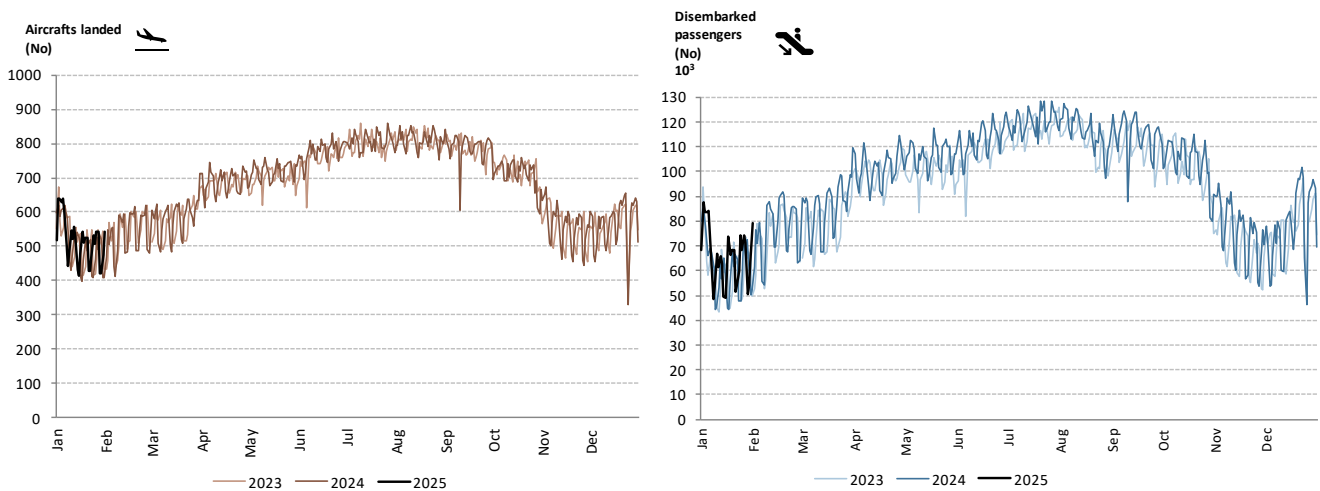
Source: Survey to airports and aerodromes (ANA/ANAC/Statistics Portugal)

Daily average of 65.6 thousand passengers disembarked

The daily movement of aircrafts and passengers is typically influenced by seasonal and weekly cycle fluctuations. The highest daily values are generally recorded during the summer period and, in 2024, Sunday was the day of the week with the highest number of disembarked passengers.

At the beginning of 2025 there were still historic monthly highs of passengers at national airports. In January 2025, there was a daily average of 65.6 thousand passengers disembarked, a higher value than the one registered in January 2024 (61.4 thousand; +6.8%).

Figure 3. Aircrafts landed and disembarked passengers at national airports – daily



Source: Survey to airports and aerodromes (ANA/ANAC/Statistics Portugal)

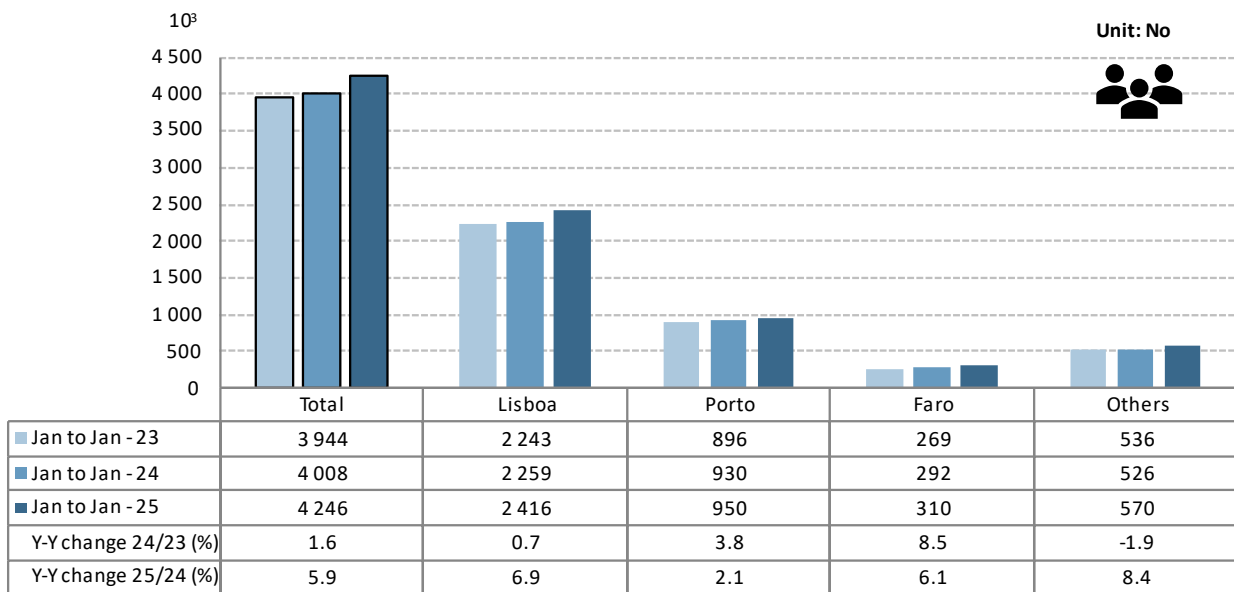


Movement of passengers at Funchal airport surpassed that of Faro, corresponding to the 3rd highest in terms of traffic in January 2025

In January 2025, the movement of passengers in Lisboa airport corresponded to 56.9% of total handled passengers (2.4 million), +6.9% compared with January 2024. Faro airport recorded an increase of 6.1% in the movement of passengers (309.9 thousand) and Porto airport accounted for 22.4% of total passengers handled (949.6 thousand) and increased by 2.1%.

It is important to highlight that the Funchal airport was the 3rd airport with the highest passenger traffic in January 2025 (330.0 thousand; +9.3%), surpassing the Faro airport.

Figure 4. Movement of passengers at national airports



Source: Survey to airports and aerodromes (ANA/ANAC/Statistics Portugal)

Considering the volume of passengers disembarked and embarked on international flights in January 2025, France was the main country of origin and destination of flights, recording increases in the number of disembarked and embarked passengers compared with January 2024 (+6.5%; +1.9%). Spain and the United Kingdom ranked 2nd and 3rd as the main countries of origin, and inversely as the main countries of destination. Brazil and Germany switched between 4th and 5th position as country of origin or destination of the flights.



Table 1. Main countries of origin and destination of flights with passengers at national airports

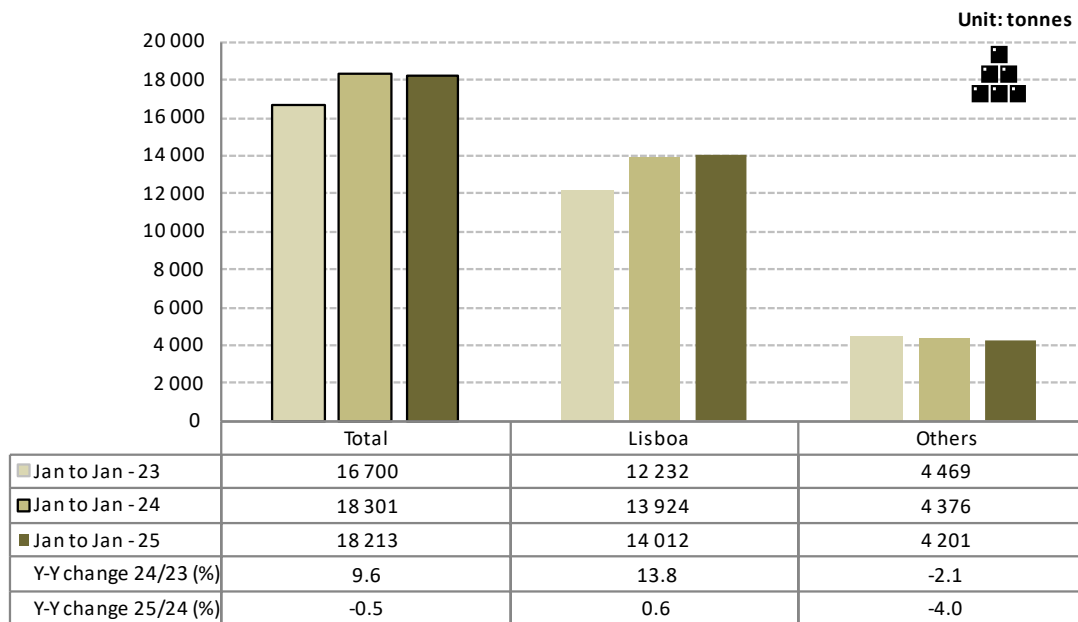
Ranking	Country of origin (of the flight)	Unit: No		Ranking	Country of destination (of the flight)	Unit: No	
		Jan 2025				Jan 2025	
		Passengers disembarked (10 ³)	Y-on-Y change (%)			Passengers embarked (10 ³)	Y-on-Y change (%)
1	France	230.6	6.5	1	France	257.3	1.9
2	Spain	217.8	1.5	2	United Kingdom	232.2	-0.1
3	United Kingdom	190.5	0.8	3	Spain	228.2	1.9
4	Brazil	131.7	5.5	4	Germany	153.4	8.1
5	Germany	126.1	7.4	5	Brazil	119.4	3.1

Source: Survey to airports and aerodromes (ANA/ANAC/Statistics Portugal)

In January 2025, there was a slight decrease (-0.5%) in freight and mail handled at national airports. The movement of freight and mail at Lisboa airport represented 76.9% of the total, reaching 14.0 thousand tonnes (+0.6% compared with January 2024).

Considering the group of other airports, the movement of freight and mail decreased by 4.0%.

Figure 5. Freight and mail movement at national airports



Source: Survey to airports and aerodromes (ANA/ANAC/Statistics Portugal)



METHODOLOGICAL NOTES

In this Press Release the following statistical data are used:

2025: preliminary results;

2024: provisional results;

2023: definitive results.

Main national airports (considered in this Press Release as national airports): Lisboa, Porto, Faro, Ponta Delgada, Madeira, Porto Santo, Beja, Horta, Flores, Santa Maria, Terceira, Pico, Graciosa, São Jorge, Corvo, Portimão, Bragança, Cascais, Vila Real and Viseu.

SOURCES: Survey to airports and aerodromes (ANA/ANAC/Statistics Portugal)

MAIN CONCEPTS:

Commercial aviation - Air transport flight performed for the public transport of passengers, freight or mail, for remuneration and for hire.

Commercial air traffic - Movement of aircrafts, passengers, freight and mail in commercial aviation.

INTERACTIVE APPLICATION AT STATISTICS PORTUGAL:

[Interactive Application](#) (available only in Portuguese)

Monthly indicators at Statistics Portugal portal:

[Aircrafts landed \(No.\) in airports by Geographic localization, Type of traffic and Nature of traffic; Monthly](#)

[Aircrafts landed \(No.\) in airports by Continent of origin; Monthly](#)

[Aircrafts take-offs \(No.\) in airports by Geographic localization, Type of traffic and Nature of traffic; Monthly](#)

[Disembarked passengers \(No.\) in airports by Geographic localization, Type of traffic and Nature of traffic; Monthly](#)

[Disembarked passengers \(No.\) in Airports by Continent of origin; Monthly](#)

[Embarked passengers \(No.\) in airports by Geographic localization, Type of traffic and Nature of traffic; Monthly](#)

[Embarked passengers \(No.\) in airports by Destination continent; Monthly](#)

[Passengers in direct transit \(No.\) in airports by Geographic localization, Type of traffic and Nature of traffic; Monthly](#)

[Disembarked load \(t\) in airports by Geographic localization, Type of traffic and Nature of traffic; Monthly](#)

[Embarked load \(t\) in airports by Geographic localization, Type of traffic and Nature of traffic; Monthly](#)

[Disembarked mail \(t\) in airports by Geographic localization, Type of traffic and Nature of traffic; Monthly](#)

[Embarked mail \(t\) in airports by Geographic localization, Type of traffic and Nature of traffic; Monthly](#)



INSTITUTO NACIONAL DE ESTATÍSTICA
STATISTICS PORTUGAL

press release



ACRONYMS AND DESIGNATIONS

ANA	Portugal Airports, S.A.
ANAC	National Civil Aviation Authority
INE	Statistics Portugal

Next Press Release (monthly) - Air Transport Flash Statistics – April 14th, 2025

Next Press Release (quarterly) - Transport activities (Q1 2025) – June 6th, 2025
