

March 27<sup>th</sup> 2026
 Trade Turnover, Employment, Wages and Salaries and Hours worked Indexes  
 February 2026

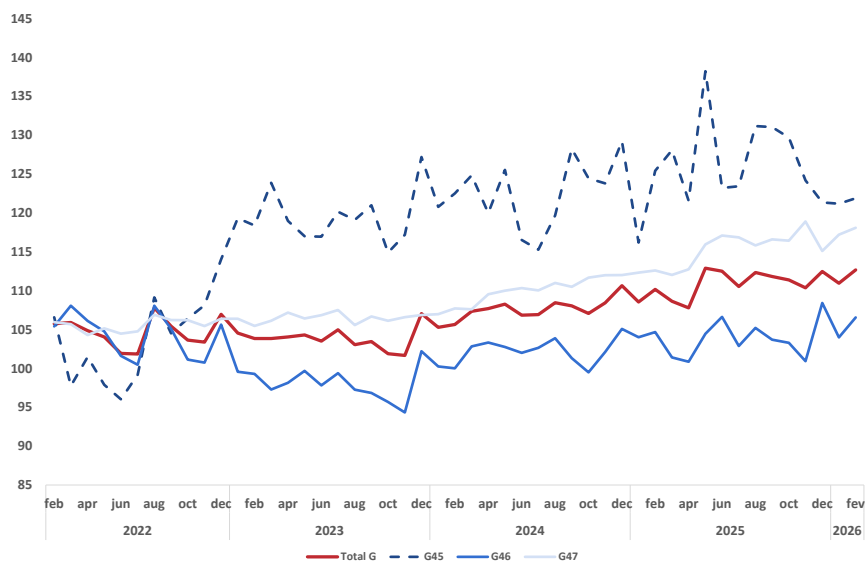
### TRADE TURNOVER<sup>1</sup> GREW 2.3%

The trade turnover index recorded a year-on-year change rate of 2.3% in February, representing an acceleration of 0.1 percentage points (p.p.) compared to the previous month. Retail trade turnover grew by 4.9% (4.4% in January), while wholesale trade increased by 1.8% (no change in the preceding month).

The employment and wages indices showed year-on-year variations of 0.2% and 7.0% in February, respectively (0.6% and 5.9% in January).

Figure 1

#### TURNOVER IN TRADE



Next Press Release –May 4<sup>th</sup>, 2026

<sup>1</sup> Trade indices for turnover analysed are deflated and adjusted for calendar and seasonal effects.