

March 18th, 2026
 INDUSTRIAL PRODUCTION PRICES INDEX
 February 2026

PRICES IN INDUSTRIAL PRODUCTION DECREASED 3.5%

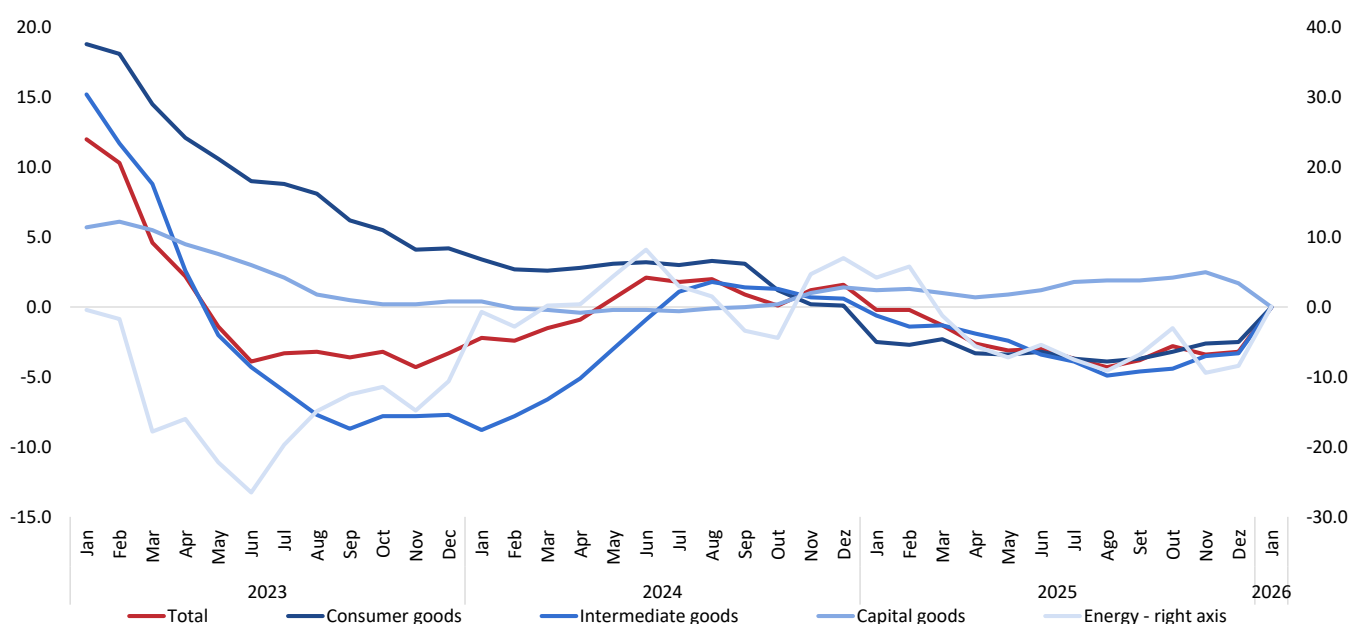
The Industrial Producer Price Index (IPPI) declined by 3.5% year-on-year in February, a rate 1.4 percentage points (p.p.) lower than in the previous month. This development mainly reflects a sharper decrease in *Energy prices*, which contributed -3.3 p.p. to the overall index.

On a monthly basis, the index fell by 1.1%, reversing the 0.3% increase recorded in February 2025.

Figure 1

TOTAL AND MAIN INDUSTRIAL GROUPINGS

Year on year change rate (%)



Next Press Release – April 20th, 2026