



THE UNEMPLOYMENT RATE STOOD AT 6.6%

In the **1st quarter of 2025**, the employed population (5,181.4 thousand people) increased by 0.6% (32.6 thousand) from the previous quarter and by 2.4% (122.0 thousand) from one year before.

The share of the employed population who has teleworked, that is who has worked from home using information and communication technologies, was 20.9% (1,083.0 thousand people), 0.4 percentage points (pp) more than in the 4th quarter of 2024 and 1.7 pp more than in the 1st quarter of that year.

The unemployed population, estimated at 365.8 thousand people, has decreased by 0.7% (2.5 thousand) from the previous quarter and by 1.0% (3.8 thousand) from a year earlier.

The unemployment rate stood at 6.6%, down 0.1 pp from the previous quarter and down 0.2 pp from the 1st quarter of 2024.

The labour underutilisation covered 628.4 thousand people, having increased by 0.5% (2.9 thousand) from the previous quarter and decreased by 3.4% (21.9 thousand) from a year before. On the other hand, the labour underutilisation rate (11.1%) remained unchanged in the quarterly comparison and decreased in the year-on-year one (0.6 pp).

The inactive population aged 16 and over (3,750.8 thousand people) has increased by 0.4% (13.5 thousand) from the previous quarter and by 0.4% (16.8 thousand) in the year-on-year comparison.

1. Labour force (active population)

The results of the Labour Force Survey for the 1st quarter of 2025 show that the labour force (active population), estimated at 5,547.2 thousand people, has increased by 0.5% (30.0 thousand people) from the previous quarter and by 2.2% (118.3 thousand) from the same quarter of 2024.

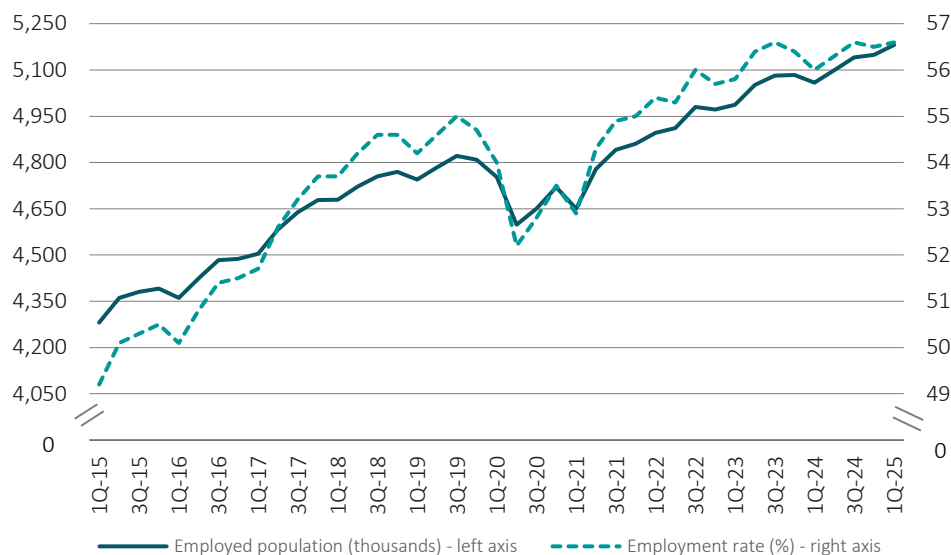
This translated into an activity rate of the working age population (those aged 16 to 89) of 60.6%, up 0.1 percentage points (pp) from the preceding quarter and 0.5 pp from one year earlier.

2. Employed population

In the 1st quarter of 2025, the employed population stood at 5,181.4 thousand people, the highest value of the data series started in 2011, having increased by 0.6% (32.6 thousand) from the previous quarter and by 2.4% (122.0 thousand) from one year earlier. The corresponding employment rate stood at 56.6%, increasing by 0.1 pp from the 4th quarter of 2024 and by 0.6 pp from the 1st quarter of 2024.



Figure 1. Employed population and employment rate



Source: Statistics Portugal, Labour Force Survey – 1st quarter of 2025.

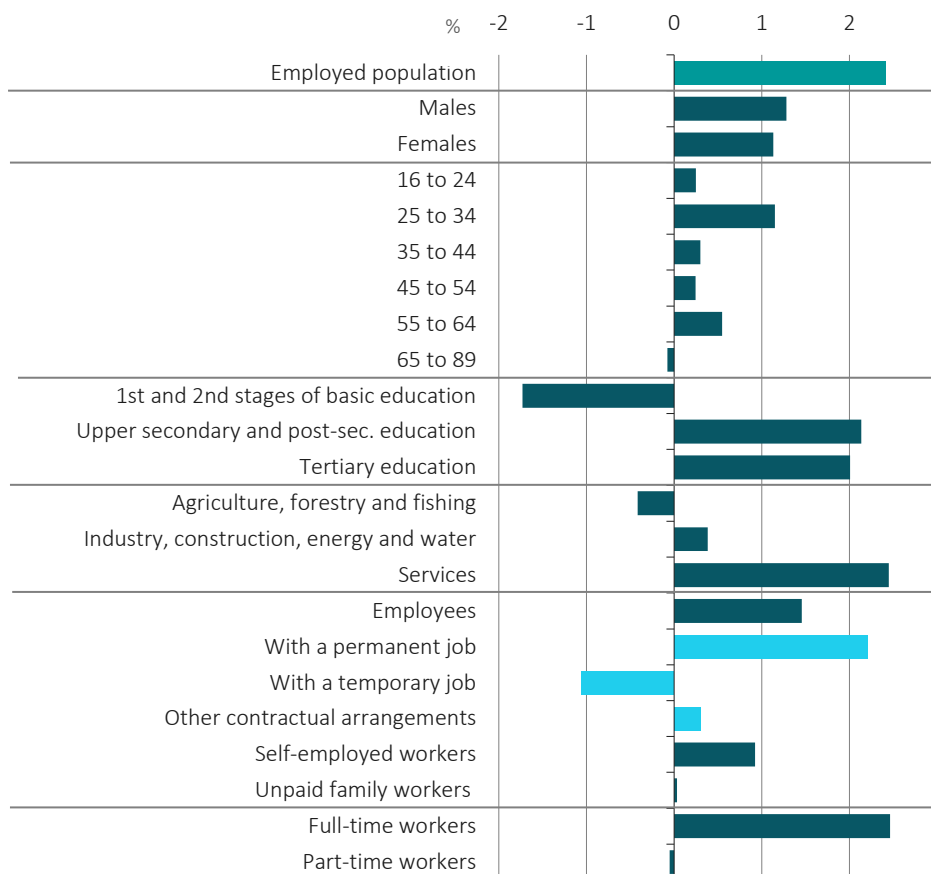
The year-on-year change of the employed population (Figure 2) was mainly due to the increases in the following population groups: men (64.9 thousand; 2.5%); people aged 25 to 34 (6.0 thousand; 58.2%); with upper secondary and post-secondary education (108.1 thousand; 6.6%) and tertiary education (101.5 thousand; 6.1%); employed in the services sector (123.9 thousand; 3.4%), namely in the sections of economic activity G (Wholesale and retail trade; repair of motor vehicles and motorcycles), H (Transportation and storage) and I (Accommodation and food services activities), whose increase (40.6 thousand; 3.2%) accounted for 32.8% of the sector change; employees (73.7 thousand; 1.7%), with a permanent contract (111.6 thousand; 3.1%); and working full-time (124.6 thousand; 2.7%).

Considering the total employed population, 21.8% (1,128.3 thousand) reported having worked from home in the 1st quarter of 2025.¹ Among those who worked at home, 23.4% (264.2 thousand) did so always, 38.2% (430.7 thousand) did so regularly through a hybrid working model that combines face-to-face work and work at home, 14.4% (162.6 thousand) worked from home on occasion, and 24.0% (270.7 thousand) did so outside working hours. In absolute terms, the largest quarter-on-quarter change occurred in the latter group (22.2 thousand; 1.5 pp), while the highest year-on-year change occurred in the group of those who combined face-to-face and home working (52.3 thousand; 2.4 pp).

¹ These indicators were computed from the data collected in the Labour Force Survey module on 'Working from home'. Other indicators related to this subject are available in the Excel tables published together with this Press Release.



Figure 2. Contributions to the year-on-year rate of change of the employed population in the 1st quarter of 2025



Source: Statistics Portugal, Labour Force Survey – 1st quarter of 2025.

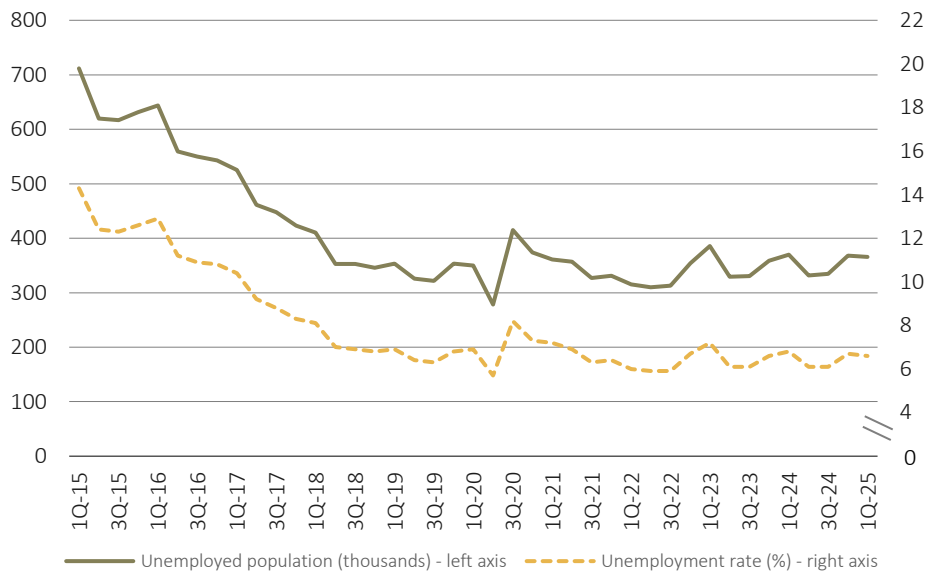
Among those in hybrid work, the most common model was the one that combines a few days a week at home in every week (75.9%; 326.8 thousand), being also the one that had the largest quarterly (15.9 thousand more people) and year-on-year change (47.9 thousand more people). Employed persons in a hybrid working model worked at home on average three days a week.

Also, among those working at home, 96.0% (1,083.0 thousand) have teleworked, that is, they have used information and communication technologies (ICT) to perform their jobs from home. This work practice covered 20.9% of the total employed population, 0.4 pp more than in the previous quarter and 1.7 pp more than in the same quarter of 2024.

3. Unemployed population

In the 1st quarter of 2025, the unemployed population (365.8 thousand people) decreased from the previous quarter (2.5 thousand; 0.7%) and from a year earlier (3.8 thousand; 1.0%).

Figure 3. Unemployed population and unemployment rate



Source: Statistics Portugal, Labour Force Survey – 1st quarter of 2025.

The year-on-year change of the unemployed population (Figure 4) was mainly due to the decreases in the following population groups: women (10.1 thousand; 5.0%); people aged 35 to 44 (11.2 thousand; 15.5%); having completed, at most, the first or second stages of basic education (16.6 thousand; 11.2%); looking for the first job (2.5 thousand; 5.0%); and unemployed for less than 12 months (16.4 thousand; 6.6%).

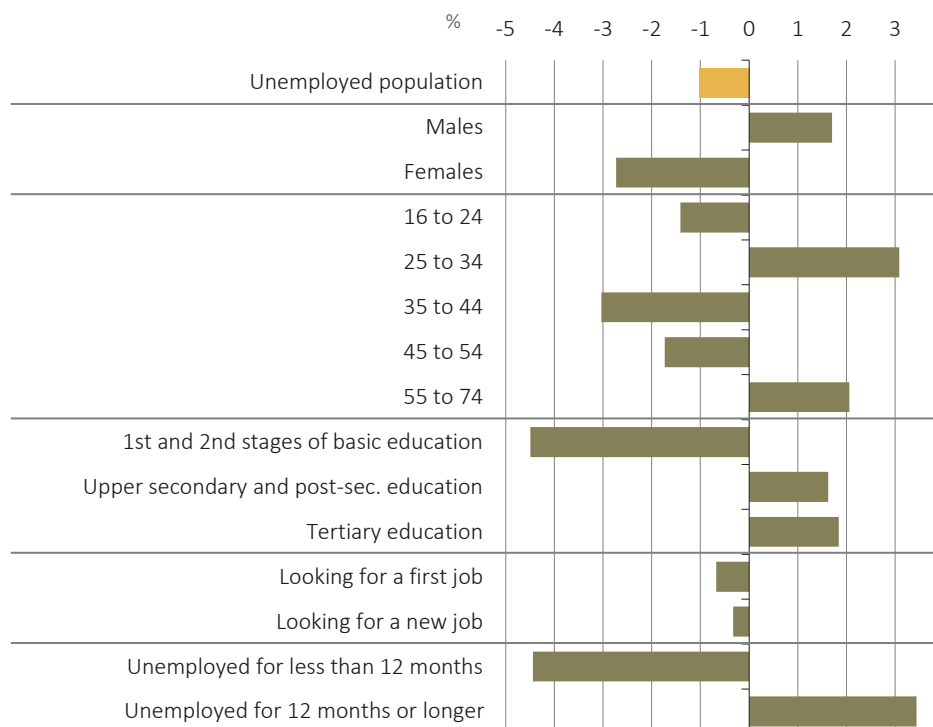
In the 1st quarter of 2025, 36.9% of the unemployed population was in this situation for 12 months or longer (long-term unemployment), down 0.6 pp from the preceding quarter and up 3.8 pp from a year earlier. This situation was most common among those aged 55 to 74 (56.0%) and those who have completed, at most, the first or second stages of basic education (46.2%).

The year-on-year change of the proportion of long-term unemployment was driven by increases in the following population groups: men (3.9 pp) and women (3.7 pp), those aged 16 to 24 (6.9 pp), those who have completed, at most, the first or second stages of basic education (4.8 pp) and those with upper secondary and post-secondary education (5.0 pp).

The share of very long-term unemployment (24 months or longer) in the long-term unemployment (49.3%) has decreased by 10.8 pp from the previous quarter and by 6.3 pp from the same quarter of 2024.



Figure 4. Contributions to the year-on-year rate of change of the unemployed population in the 1st quarter of 2025



Source: Statistics Portugal, Labour Force Survey – 1st quarter of 2025.

Table 1. Unemployed population for 12 months or longer (long-term unemployment)

| Portugal | Quarterly level | | | Proportion ^(a) |
|---|-----------------|--------------|--------------|---------------------------|
| | 1Q-2024 | 4Q-2024 | 1Q-2025 | 1Q-2025 |
| | Thousands | | | % |
| Total | 122.3 | 138.1 | 135.0 | 36.9 |
| Males | 55.4 | 67.4 | 64.3 | 36.7 |
| Females | 66.9 | 70.7 | 70.7 | 37.1 |
| 16 to 24 | 11.7 | 17.4 | 16.5 | 20.5 |
| 25 to 34 | 22.9 | 26.4 | 25.3 | 27.8 |
| 35 to 44 | 24.3 | 19.6 | 23.8 | 38.5 |
| 45 to 54 | 29.5 | 33.4 | 30.1 | 48.2 |
| 55 to 74 | 33.9 | 41.4 | 39.3 | 56.0 |
| Lower secondary education (at most) | 61.2 | 64.6 | 60.6 | 46.2 |
| Upper secondary and post-secondary non-tertiary | 40.5 | 47.7 | 49.3 | 34.6 |
| Tertiary education | 20.7 | 25.8 | 25.0 | 27.2 |
| Unemployed for less than 24 months | 54.3 | 55.1 | 68.4 | 50.7 |
| Unemployed for 24 months or longer | 68.0 | 83.0 | 66.5 | 49.3 |

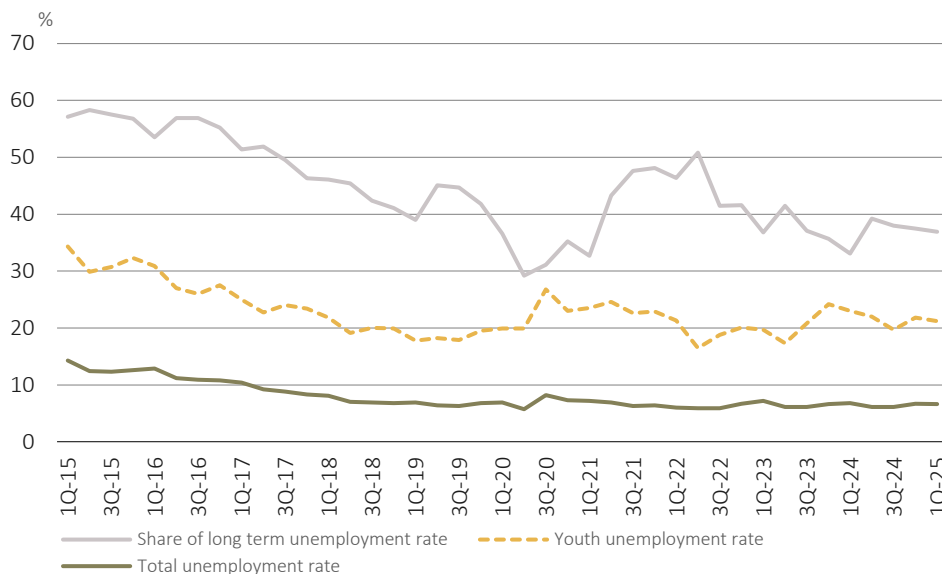
Source: Statistics Portugal, Labour Force Survey – 1st quarter of 2025.

Note: (a) The proportions shown, except for the last two, have been calculated considering the unemployed population. The proportions referring to the duration of long-term unemployment were based on the unemployed population for 12 months or longer.



The unemployment rate for the 1st quarter of 2025 stood at 6.6%², decreasing from the previous quarter (0.1 pp) and from the 1st quarter of 2024 (0.2 pp). The youth unemployment rate (16 to 24 years old) was estimated at 21.2%, down from the previous quarter (0.6 pp) and from a year earlier (1.8 pp).

Figure 5. Total and youth unemployment rate and share of long-term unemployment



Source: Statistics Portugal, Labour Force Survey – 1st quarter of 2025.

In the 4th quarter of 2024, the youth unemployment rate in the European Union (The unemployment rate for the 1st quarter of 2025 stood at 6.6%, decreasing from the previous quarter (0.1 pp) and from the 1st quarter of 2024 (0.2 pp). The youth unemployment rate (16 to 24 years old) was estimated at 21.2%, down from the previous quarter (0.6 pp) and from a year earlier (1.8 pp).

Figure 6)³, at 27 countries, was estimated at 14.3%, 7.5 pp less than in Portugal (21.8%), which in that quarter had the fourth highest rate in the EU-27.

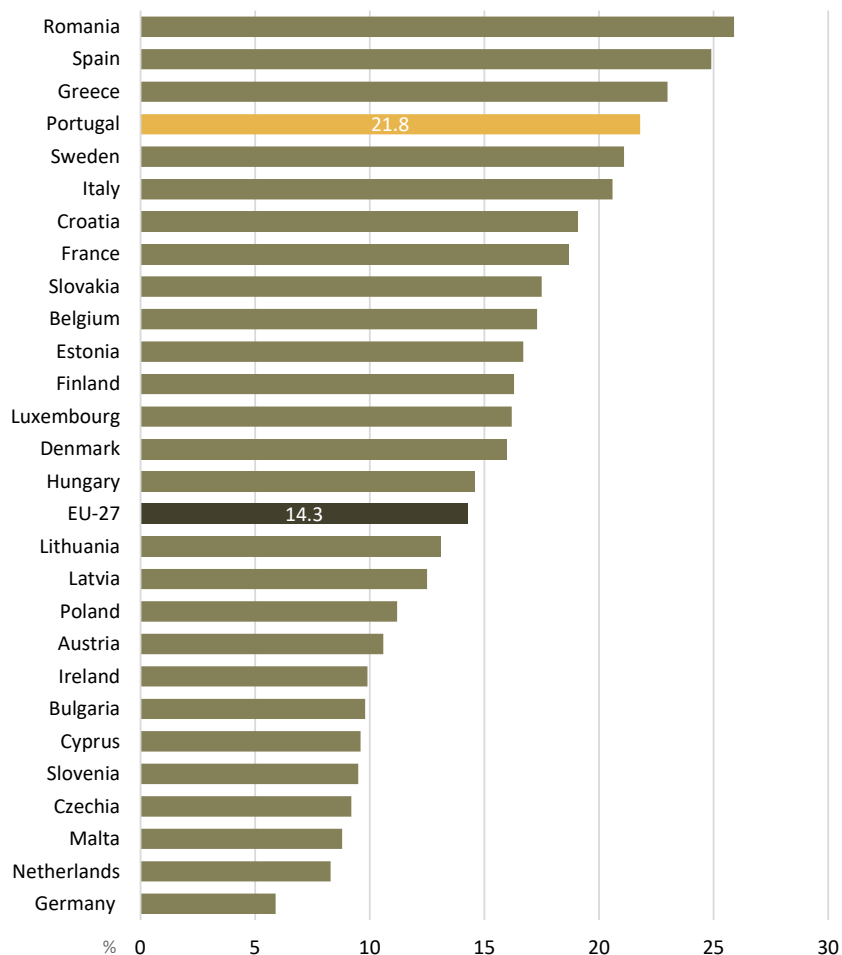
From the 3rd quarter of 2024, the youth unemployment rate decreased by 1.4 pp in the EU-27 and increased by 2.1 pp in Portugal. From the 4th quarter of 2023, the rate decreased more for Portugal (2.4 pp) than for the EU-27 (0.4 pp).

² This unemployment rate was calculated for those aged 16 to 89 (in line with the concepts in force of the International Labour Organization). The unemployment rate for the moving quarter centered in February 2025 (which corresponds to the 1st quarter 2025), published in the Monthly Employment and Unemployment Estimates Press Release of March 2025 (released in 30-4-2025), was calculated for the age subgroup of those aged 16 to 74 (as in the Eurostat News Release). This rate (not seasonally adjusted) was 6.5%.

³ The estimates for the 1st quarter of 2025 at European Union level will be released on June 13, 2025. Their reference age group is that of 15 to 24 years old, except for Portugal, Spain and Italy, whose lower age limit is 16.



Figure 6. Youth unemployment rate in the European Union in the 4th quarter of 2024



Source: Eurostat, Unemployment by sex and age – quarterly data [\[UNE RT Q\]](#)

In the 1st quarter of 2025, the unemployment rate was higher than the national average (6.6%) in five NUTS 2 (NUTS-2024) regions (*Península de Setúbal*: 8.5%; *Algarve*: 8.1%; *Norte*: 6.8%; *Grande Lisboa*: 6.8%; and *Região Autónoma da Madeira*: 6.7%) and lower in the remaining four (*Oeste e Vale do Tejo*: 5.9%; *Alentejo*: 5.8%; *Região Autónoma dos Açores*: 5.7%; and *Centro*: 5.1%).

Compared to the previous quarter, the unemployment rate rose in four regions, standing out the 2.5 pp increase in the *Algarve*, it remained unchanged in the *Alentejo*, and it fell in the remaining four NUTS 2 regions, with the 0.7 pp decrease in the *Centro* region standing out.

A similar pattern was observed in the year-on-year comparison, with increases in four regions being observed, the largest of which in the *Região Autónoma da Madeira* (0.8 pp), decreases in four other regions, particularly in the *Centro* (1.4 pp), and the unemployment rate remaining unchanged in the *Norte*.

Table 2. Unemployment rates by NUTS 2 region (NUTS-2024)



| Portugal | Quarterly level | | | Rate of change | |
|----------------------------|-----------------|------------|------------|----------------|--------------|
| | 1Q-2024 | 4Q-2024 | 1Q-2025 | On year | On quarter |
| | % | | | pp | |
| Portugal | 6.8 | 6.7 | 6.6 | - 0.2 | - 0.1 |
| Norte | 6.8 | 6.9 | 6.8 | - | - 0.1 |
| Centro | 6.5 | 5.8 | 5.1 | - 1.4 | - 0.7 |
| Oeste de Vale do Tejo | 7,1 § | 6,2 § | 5,9 § | - 1.2 | - 0.3 |
| Grande Lisboa | 6.6 | 7.4 | 6.8 | 0.2 | - 0.6 |
| Península de Setúbal | 8,0 § | 7,7 § | 8,5 § | 0.5 | 0.8 |
| Alentejo | 6,2 § | 5.8 | 5,8 § | - 0.4 | - |
| Algarve | 7.8 | 5.6 | 8.1 | 0.3 | 2.5 |
| Região Autónoma dos Açores | 6,7 § | 5,4 § | 5,7 § | - 1.0 | 0.3 |
| Região Autónoma da Madeira | 5,9 § | 5.7 | 6.7 | 0.8 | 1.0 |

Source: Statistics Portugal, Labour Force Survey – 1st quarter of 2025.

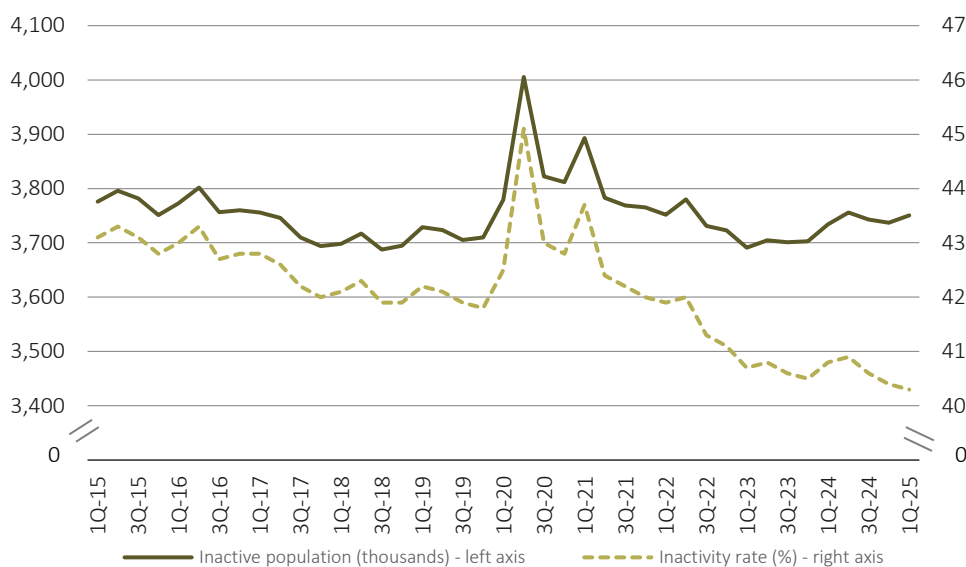
Conventional sign: - Null or not applicable. § Value with low reliability.

4. Inactive population

The inactive population, estimated at 5,209.9 thousand people in the 1st quarter of 2025, has increased by 0.2% (10.7 thousand) from the previous quarter and by 0.2% (11.2 thousand) from the same quarter of 2024.

The inactive population aged 16 and over, which stood at 3,750.8 thousand people, accounted for 72.0% of the total inactive population and has also increased both from the previous quarter (13.5 thousand; 0.4%) and from a year earlier (16.8 thousand; 0.4%).

Figure 7. Inactive population (aged 16 and over)



Source: Statistics Portugal, Labour Force Survey – 1st quarter of 2025.

The inactivity rate (aged 16 and over) stood at 40.3%, down 0.1 pp from the 4th quarter of 2024 and 0.5 pp from the 1st quarter of 2024.



5. Supplementary indicators to unemployment and the labour underutilisation

The labour underutilisation is an indicator that aggregates the unemployed population, the underemployment of part-time workers, the inactive seeking work but not immediately available, and the inactive available but not seeking work⁴. This indicator is supplemented by its corresponding rate – the labour underutilisation rate. This indicator is a broader measure of the labour underutilisation than the unemployment rate.

In the 1st quarter of 2025, the labour underutilisation was estimated at 628.4 thousand people and the corresponding rate was 11.1%.

The labour underutilisation has increased from the 4th quarter of 2024 (2.9 thousand; 0.5%) and decreased from the 1st quarter of 2024 (21.9 thousand; 3.4%). On the other hand, the labour underutilisation rate matched that of the previous quarter and was down 0.6 pp from the same quarter of 2024.

By component, the following is observed:

- The unemployed population was estimated at 365.8 thousand people and, as previously mentioned, decreased by 0.7% (2.5 thousand) from the previous quarter and by 1.0% (3.8 thousand) from the 1st quarter of 2024. The unemployment rate was 6.6%, down 0.1 pp from the previous quarter and 0.2 pp from the same quarter of a year earlier.
- The number of underemployed part-time workers was 136.1 thousand people, which corresponded to a quarterly decrease of 6.3% (9.1 thousand) and to a year-on-year decrease of 6.1% (8.8 thousand).
- The number of inactive persons seeking work but not immediately available stood at 30.9 thousand, up from the previous quarter (9.2 thousand; 42.2%) and from the same quarter of 2024 (1.3 thousand; 4.7%).
- The number of inactive persons available to work but not seeking a job covered 95.6 thousand, which represented a quarterly increase (5.4 thousand; 5.9%) and a year-on-year decrease (10.6 thousand; 10.0%).

⁴ See concepts in the Technical note and, for a more detailed definition of these indicators, see the publication “Estatísticas do Emprego – 2.º trimestre de 2012” (only available in Portuguese) – chapter 4 (Concepts) and 6 (Theme under analysis) available at: <http://www.ine.pt/xurl/pub/143643471>.



Table 3. Labour underutilisation by component

| Portugal | Quarterly level | | | Rate of change | |
|--|-----------------|--------------|--------------|----------------|------------|
| | 1Q-2024 | 4Q-2024 | 1Q-2025 | On year | On quarter |
| Number | Thousands | | | % | |
| Total | 650.3 | 625.5 | 628.4 | - 3.4 | 0.5 |
| Unemployed population | 369.6 | 368.3 | 365.8 | - 1.0 | - 0.7 |
| Underemployed part-time workers | 144.9 | 145.2 | 136.1 | - 6.1 | - 6.3 |
| Persons seeking work but not immediately available | 29.6 | 21.7 | 30.9 | 4.7 | 42.2 |
| Persons available to work but not seeking | 106.2 | 90.2 | 95.6 | - 10.0 | 5.9 |
| Rate | % | | | pp | |
| Unemployment rate | 6.8 | 6.7 | 6.6 | - 0.2 | - 0.1 |
| Labour underutilisation rate | 11.7 | 11.1 | 11.1 | - 0.6 | - |

Source: Statistics Portugal, Labour Force Survey – 1st quarter of 2025.

Conventional sign: - Null or not applicable.



Table 4. Main indicators – active and employed population

| Portugal | Quarterly level | | | Rate of change | |
|---|-----------------|----------------|----------------|----------------|------------|
| | 1Q-2024 | 4Q-2024 | 1Q-2025 | On year | On quarter |
| | Thousands | | | % | |
| Labour force (active population) | 5,428.9 | 5,517.2 | 5,547.2 | 2.2 | 0.5 |
| Males | 2,737.3 | 2,782.2 | 2,808.6 | 2.6 | 0.9 |
| Females | 2,691.6 | 2,734.9 | 2,738.7 | 1.7 | 0.1 |
| 16 to 24 | 371.3 | 392.6 | 378.8 | 2.0 | -3.5 |
| 25 to 34 | 1,048.0 | 1,083.4 | 1,117.6 | 6.6 | 3.2 |
| 35 to 44 | 1,259.0 | 1,256.9 | 1,262.9 | 0.3 | 0.5 |
| 45 to 54 | 1,458.4 | 1,464.3 | 1,464.4 | 0.4 | 0 |
| 55 to 64 | 1,059.3 | 1,083.2 | 1,092.9 | 3.2 | 0.9 |
| 65 to 89 | 232.9 | 236.8 | 230.7 | -1.0 | -2.6 |
| Lower secondary education (at most) | 1,899.1 | 1,817.8 | 1,795.1 | -5.5 | -1.3 |
| Upper secondary and post-secondary non-tertiary | 1,771.5 | 1,820.6 | 1,885.6 | 6.4 | 3.6 |
| Tertiary education | 1,758.3 | 1,878.8 | 1,866.6 | 6.2 | -0.7 |
| Activity rate (%) | 60.1 | 60.5 | 60.6 | | |
| Males | 63.9 | 64.3 | 64.5 | | |
| Females | 56.7 | 57.1 | 57.0 | | |
| Employed population | 5,059.4 | 5,148.8 | 5,181.4 | 2.4 | 0.6 |
| Males | 2,568.4 | 2,602.1 | 2,633.3 | 2.5 | 1.2 |
| Females | 2,490.9 | 2,546.8 | 2,548.1 | 2.3 | 0.1 |
| 16 to 24 | 285.7 | 306.9 | 298.3 | 4.4 | -2.8 |
| 25 to 34 | 968.4 | 1,001.6 | 1,026.6 | 6.0 | 2.5 |
| 35 to 44 | 1,186.0 | 1,193.1 | 1,201.1 | 1.3 | 0.7 |
| 45 to 54 | 1,389.6 | 1,395.2 | 1,402.0 | 0.9 | 0.5 |
| 55 to 64 | 1,001.8 | 1,020.1 | 1,029.5 | 2.8 | 0.9 |
| 65 to 89 | 227.9 | 231.9 | 224.0 | -1.7 | -3.4 |
| Lower secondary education (at most) | 1,751.3 | 1,686.9 | 1,663.8 | -5.0 | -1.4 |
| (Upper) secondary and post-secondary non-tertiary education | 1,634.7 | 1,680.7 | 1,742.8 | 6.6 | 3.7 |
| Tertiary education | 1,673.3 | 1,781.3 | 1,774.8 | 6.1 | -0.4 |
| Agriculture, forestry and fishing (a) | 148.4 | 142.9 | 127.3 | -14.2 | -10.9 |
| Industry, construction, energy and water (a) | 1,278.8 | 1,266.3 | 1,298.1 | 1.5 | 2.5 |
| Services (a) | 3,632.1 | 3,739.7 | 3,756.0 | 3.4 | 0.4 |
| Employees | 4,324.7 | 4,368.1 | 4,398.4 | 1.7 | 0.7 |
| With a permanent job (work contract of unlimited duration) | 3,620.4 | 3,676.7 | 3,732.0 | 3.1 | 1.5 |
| With a temporary job (work contract of limited duration) | 583.6 | 552.3 | 530.3 | -9.1 | -4.0 |
| Other contractual arrangements | 120.7 | 139.1 | 136.2 | 12.8 | -2.1 |
| Self-employed workers | 708.5 | 755.7 | 755.2 | 6.6 | -0.1 |
| Unpaid family workers | 26.2 | 25.1 | 27.8 | 6.1 | 10.6 |
| Full-time workers | 4,628.8 | 4,705.3 | 4,753.4 | 2.7 | 1.0 |
| Part-time workers | 430.5 | 443.5 | 428.0 | -0.6 | -3.5 |
| Underemployed part-time workers | 144.9 | 145.2 | 136.1 | -6.1 | -6.3 |
| Employment rate (%) | 56.0 | 56.5 | 56.6 | | |
| Males | 60.0 | 60.2 | 60.5 | | |
| Females | 52.5 | 53.2 | 53.0 | | |

Source: Statistics Portugal, Labour Force Survey – 1st quarter of 2025.

Notes: (a) The estimates are presented by NACE-Rev. 2. **Conventional sign:** ◊ Less than half of the unit used.

EMPLOYMENT STATISTICS – 1st quarter of 2025



Table 5. Main indicators – unemployed and inactive population

| Portugal | Quarterly level | | | Rate of change | |
|---|-----------------|----------------|----------------|----------------|--------------|
| | 1Q-2024 | 4Q-2024 | 1Q-2025 | On year | On quarter |
| | Thousands | | | % | |
| Unemployed population | 369.6 | 368.3 | 365.8 | - 1.0 | - 0.7 |
| Males | 168.9 | 180.2 | 175.2 | 3.8 | - 2.7 |
| Females | 200.7 | 188.2 | 190.6 | - 5.0 | 1.3 |
| 16 to 24 | 85.6 | 85.7 | 80.4 | - 6.0 | - 6.1 |
| 25 to 34 | 79.7 | 81.8 | 91.1 | 14.4 | 11.4 |
| 35 to 44 | 73.0 | 63.8 | 61.8 | - 15.5 | - 3.2 |
| 45 to 54 | 68.8 | 69.1 | 62.4 | - 9.3 | - 9.7 |
| 55 to 74 | 62.5 | 68.0 | 70.1 | 12.2 | 3.1 |
| Lower secondary education (at most) | 147.8 | 130.9 | 131.2 | - 11.2 | 0.2 |
| Upper secondary and post-secondary non-tertiary education | 136.8 | 139.9 | 142.8 | 4.4 | 2.1 |
| Tertiary education | 85.0 | 97.5 | 91.8 | 8.0 | - 5.9 |
| Looking for a first job | 49.5 | 58.2 | 47.0 | - 5.0 | - 19.1 |
| Looking for a new job | 320.0 | 310.2 | 318.8 | - 0.4 | 2.8 |
| Unemployed for less than 12 months (short-term) | 247.2 | 230.3 | 230.8 | - 6.6 | 0.3 |
| Unemployed for 12 months or longer (long-term) | 122.3 | 138.1 | 135.0 | 10.3 | - 2.3 |
| Unemployment rate (%) | 6.8 | 6.7 | 6.6 | | |
| Males | 6.2 | 6.5 | 6.2 | | |
| Females | 7.5 | 6.9 | 7.0 | | |
| Youth (16 to 24) | 23.0 | 21.8 | 21.2 | | |
| Long-term | 2.3 | 2.5 | 2.4 | | |
| Inactive population | 5,198.7 | 5,199.2 | 5,209.9 | 0.2 | 0.2 |
| Inactive population (16 and over) | 3,734.0 | 3,737.3 | 3,750.8 | 0.4 | 0.4 |
| Males | 1,584.7 | 1,584.6 | 1,586.4 | 0.1 | 0.1 |
| Females | 2,149.3 | 2,152.7 | 2,164.4 | 0.7 | 0.5 |
| 16 to 24 | 606.2 | 588.4 | 615.2 | 1.5 | 4.5 |
| 25 to 34 | 101.6 | 89.6 | 89.9 | - 11.5 | 0.3 |
| 35 to 44 | 93.1 | 91.7 | 88.7 | - 4.7 | - 3.3 |
| 45 to 54 | 151.4 | 154.1 | 153.5 | 1.4 | - 0.4 |
| 55 to 64 | 435.4 | 421.9 | 413.3 | - 5.1 | - 2.0 |
| 65 to 89 | 2,211.2 | 2,250.7 | 2,252.7 | 1.9 | 0.1 |
| Students (16 to 89) | 691.3 | 673.7 | 708.5 | 2.5 | 5.2 |
| Fulfilled domestic tasks (16 to 89) | 326.7 | 331.9 | 324.6 | - 0.6 | - 2.2 |
| Retired (16 to 89) | 2,112.3 | 2,150.8 | 2,138.3 | 1.2 | - 0.6 |
| Other inactive | 603.8 | 581.0 | 579.4 | - 4.0 | - 0.3 |
| Persons seeking work but not immediately available | 29.6 | 21.7 | 30.9 | 4.7 | 42.2 |
| Persons available to work but not seeking | 106.2 | 90.2 | 95.6 | - 10.0 | 5.9 |
| Inactivity rate (16 and over) (%) | 40.8 | 40.4 | 40.3 | | |
| Males | 36.7 | 36.3 | 36.1 | | |
| Females | 44.4 | 44.0 | 44.1 | | |

Source: Statistics Portugal, Labour Force Survey – 1st quarter of 2025.



TECHNICAL NOTE

The main purpose of the Labour Force Survey is to classify the population in terms of their participation in the labour market. It is a quarterly sample survey, addressed to all persons living in the national territory.

Most of the characteristics observed in this survey report to the situation in one pre-defined week (from Monday to Sunday), known as reference week. The reference weeks are uniformly distributed throughout the quarters and years. The interviews usually take place in the week following the reference week.

The information is obtained directly, through computer-assisted interview by using a mixed data collection mode: the initial interview is done face-to-face by an interviewer visiting the household and the other five interviews are done by telephone if certain requirements are met. However, it should be noted that, following the COVID-19 pandemic and the measures adopted by the competent authorities, Statistics Portugal has decided, between the first fortnight of March 2020 and the end of the collection of the 2nd quarter of 2022, to suspend the face-to-face collection mode, replacing it exclusively with telephone interviews. After analysing the impact of this suspension, Statistics Portugal decided to incorporate the variable "completed level of education" into the process of calibrating the individual weights of the samples for the 2nd quarter of 2020 to the 3rd quarter of 2023, in addition to the information usually used (monthly estimates of the resident population by sex, age group and region).⁵

The Labour Force Survey weights were calibrated by using the resident monthly population estimates calculated from the final results of Census 2021.

Due to rounding, the totals in tables and diagrams do not always match the sum of parts.

For more detailed information consult the [Labour Force Survey methodological document](#) (only in Portuguese) available at <https://smi.ine.pt/> (tab *Documentação metodológica; tema "Labour market"*).

SOME CONCEPTS

Unemployed: person aged 16 and 74 who during the reference period met simultaneously the following situations:

- neither had a job nor was at work;
- had actively sought work, i.e. had actively searched for a paid or unpaid job during the specified period (reference period or the three previous weeks); and
- was available for a paid and unpaid job.

⁵ For more information, see the "Methodological note on the revision of the Labour Force Survey data: the context of the COVID-19 pandemic", published on 8 November 2023 together with the [Press Release "Employment Statistics – 3rd quarter of 2023"](#).



Employed: person aged 16 to 89 who, during the reference period, was in one of the following situations:

- worked for at least one hour for a wage or salary, in cash or in kind (including unpaid family work);
- had a formal attachment to his/her job but was not at work temporarily.
- was in early retirement but working in the reference week.

Working age resident population: Resident population aged 16 to 89.

Active: person aged 16 to 89 who, during the reference period, furnish the supply of labour force for the production of economic goods and services (was employed or unemployed).

Labour force: population formed by all active persons.

Extended labour force: corresponds to the labour force enlarged by the inactive seeking work but not immediately available and the inactive available but not seeking work.

Labour underutilisation: indicator that aggregates the unemployed population, the underemployment of part-time workers, the inactive seeking work but not immediately available, and the inactive available but not seeking work. All these population groups consider the age group 16 to 74.

Young people not in employment, education or training: population of young people of a given age group who, in the reference period, was not employed (i.e., was unemployed or inactive) and was not involved in education or training over a specific period of time (the reference week or in the previous three weeks).

Activity rate of the working age population: rate that defines the relation between the labour force and the working age population.

$$P.R. (\%) = (\text{Labour force} / \text{Working age population}) \times 100$$

Employment rate: rate that defines the relation between the employed population and the working age population.

$$E.R. (\%) = (\text{Employed population} / \text{Working age population}) \times 100$$

Unemployment rate: rate that defines the relation between the unemployed population and the labour force.

$$U.R. (\%) = (\text{Unemployed population} / \text{Labour force}) \times 100$$

Long term unemployment rate: rate that defines the relation between the unemployed population seeking employment for 12 months or over and the labour force.

$$L.T.U.R. (\%) = (\text{Unemployed population seeking employment for 12 months or over} / \text{Labour force}) \times 100$$



Inactivity rate of the working age population: rate that defines the relation between the working age inactive population and the working age total population.

$$\text{I.R. (\%)} = (\text{Working age inactive population} / \text{Working age population}) \times 100$$

Labour underutilisation rate: rate that defines the relation between the labour underutilisation and the extended labour force.

$$\text{L.U.R. (\%)} = (\text{Labour underutilisation} / \text{Extended labour force}) \times 100$$

Rate of young people not in employment, education or training: rate that defines the relation between the population of young people of a given age group not in employment, education or training and the total population of young people of the same age group.

On year change

The year-on-year change compares the level of the variable in the current quarter with that of the corresponding quarter of the previous year. This change considering a seasonal stable pattern is not affected by this type of fluctuation but may, however, be influenced by specific effects in a given quarter.

On quarter change

The quarterly change compares the level of the variable over two consecutive periods. Although this indicator allows to monitor the recent pace of the variable, its computation is particularly influenced by seasonal effects and other more specific effects in one (or both) of the quarters under comparison.

Next Press Release - 6 August 2025
